



EAT

Training Manual

Andy Coetzee
Version 2.5



What is EAT?

- EAT (Easy Asset Tracking) is a low cost, easy to use asset tracking solution.
- EAT uses the power of the internet to provide street level location of an asset.
- The EAT solution consists of a GSM/GPS tracking unit fitted to an asset, and access to our website.
- The tracking unit determines the start of a trip by movement of the asset in excess of 10 Km/h. The end of a trip is determined when the asset has stopped moving for more than 3 minutes.
- As a user, you are able to locate your asset in real-time, and get various reports on the activities of your assets.



Getting Started?

A screenshot of the EAT Easy Asset Tracking website's login page. The page features the EAT logo at the top left, a login form with 'Username:' and 'Password:' fields, a red 'Client Login' button, a 'Click here for our live demo' button, a Facebook link, a 'SECURED BY RapidSSL \$10,000 Warranty' badge, and version/copyright information at the bottom. A white box on the right side of the page contains a list of bullet points, with arrows pointing from the text to the corresponding fields or buttons on the page.

EAT
Easy Asset Tracking

Username:

Password:

Client Login

Click here for our live demo

Find us on Facebook

SECURED BY
RapidSSL
\$10,000 Warranty

Version 2.5.1
©2008-2010 Easy Asset Tracking

- **LOW FIXED MO**
of your assets. C
- **NO HIDDEN CO**
- **30-DAY MONEY**
our product does
- **GET ONE MONT**

- Once your asset is fitted with an EAT tracking unit, and you have received your user name and password, open your internet browser and go to <http://www.easytracking.co.za/>. You will find the login area on the left hand side of the page.

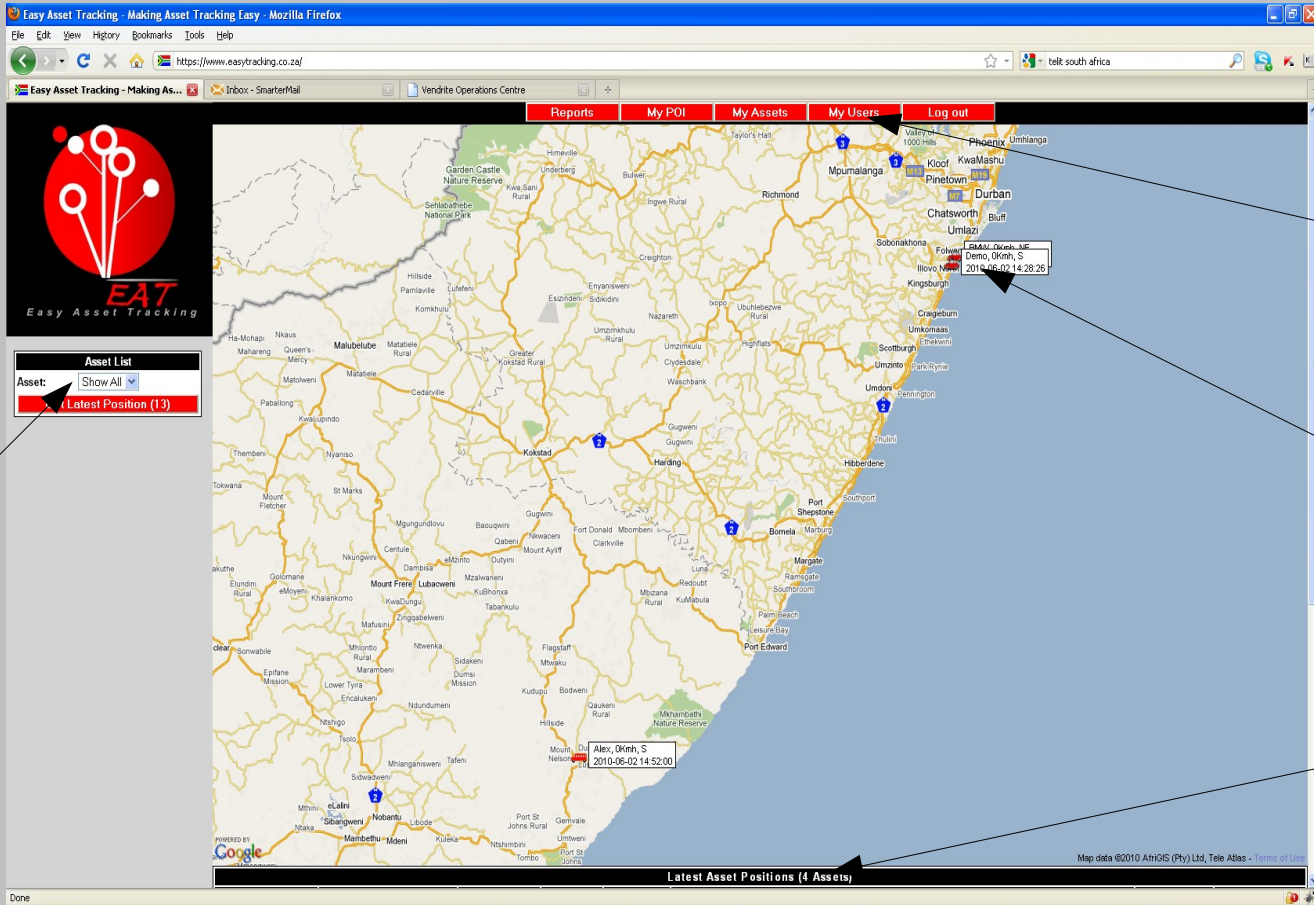
Enter your user name here

Enter your password here

Click here when done



Main Screen



List of assets

Menu
(Only My Details
and Log out will be
displayed if your
access level is
"Operator")

Latest position of
assets on the
map

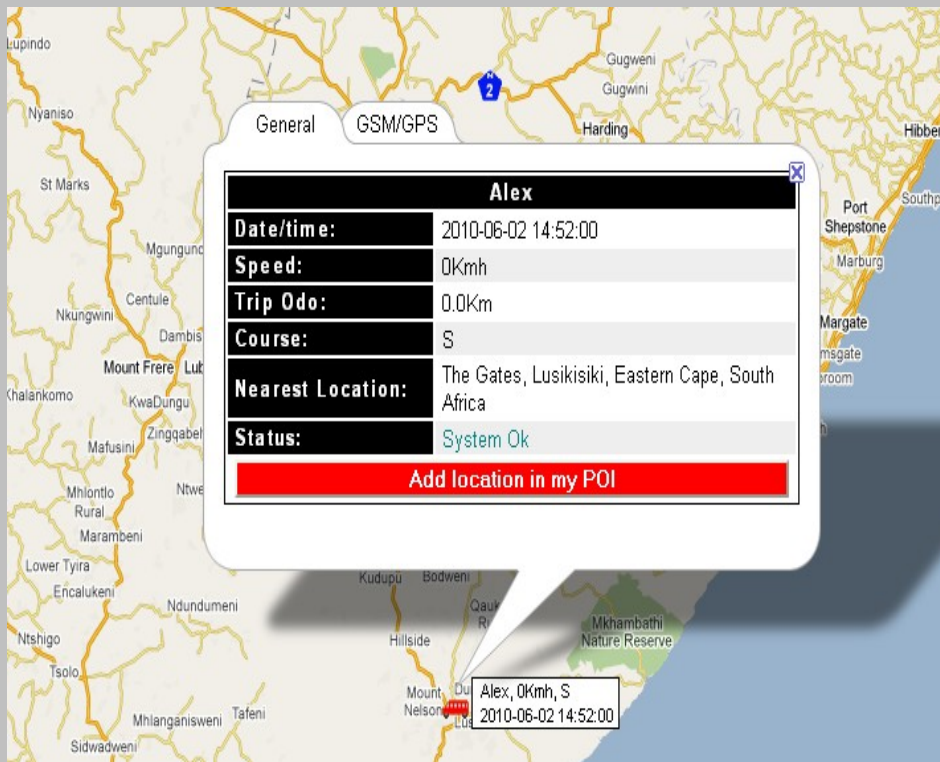
Asset summary

This screen automatically updates every few seconds



Asset On Map

- In the main screen, clicking on the asset icon will display the last location and asset details for that asset.



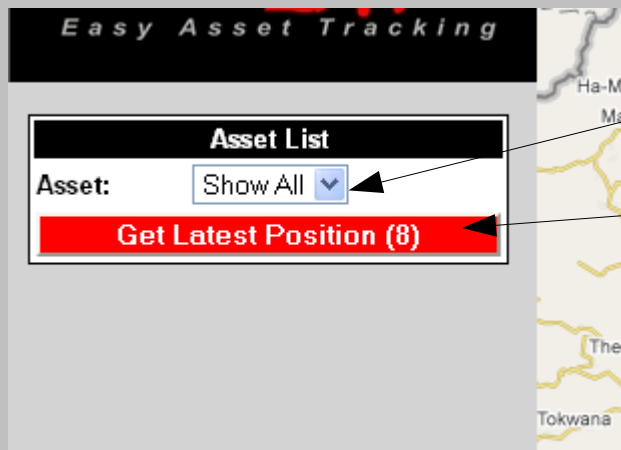
This pop-up display will show:

- The asset name
- The present speed of the asset
- Distance travelled since the start of a trip
- The direction of travel of the asset
- The nearest street address of the asset
- The status of the asset
- Add this location to your POI (This is used to personalize the address information displayed).



Asset List

- On the left hand panel, is a list of all the assets allocated to you. When set to “Show All”, all these assets are displayed on the map.



By clicking on the down-arrow, you are able to zoom in on a specific asset. Once you have selected the specific asset, click on the red “Get Latest Position” bar to get the latest information on the selected asset.

The map screen will update every few seconds, and will give the new latest information on the selected asset.



Asset List

- In the specified asset map page, detailed information for the asset will be displayed below Asset List block.

Asset: Alex

Latest Asset Details	
Name:	Alex
Description:	Demo
Last Report:	2010-06-02 16:18:25
Nearest Location:	The Gates, Lusikisiki, Eastern Cape, South Africa
Speed:	14Kmh
Course:	S
Status:	Trip Start
Trip Odometer:	0.0Km
Advanced Details	
Latitude:	-31.36024°
Longitude:	29.57345°
Altitude:	568m
GPS Accuracy:	Within 8m
GSM Network:	VodaCom-SA
Roaming:	No

This information block will show:

- The asset name
- The present speed of the asset
- Distance travelled since the start of a trip
- The direction of travel of the asset
- The nearest street address of the asset
- The status of the asset.
- The present GPS coordinates
- GSM network information



Asset Summary

- By scrolling down on the main screen to below the map, you are able to get a quick summary of all the assets allocated to you.

 The screenshot shows a mobile application interface. At the top, there is a Google Maps view showing a portion of South Africa with labels for 'Nshimboni', 'Tombo', and 'Port St Johns'. Below the map is a table titled 'Latest Asset Positions (4 Assets)'. The table has eight columns: Asset Name, Date/Time, Status, Speed, Course, Nearest Location, Latitude, and Longitude. The data rows are as follows:

Asset Name	Date/Time	Status	Speed	Course	Nearest Location	Latitude	Longitude
Alex	2010-06-02 15:52:03	System Ok	0Kmh	S	The Gates, Lusikisiki, Eastern Cape, South Africa	-31.36106°	29.57379°
BMW	2010-06-02 15:20:04	System Ok	0Kmh	NE	Beechgate Crescent, Umbogintwini, Durban, KwaZulu-Natal, South Africa	-30.02611°	30.89184°
Boat	2010-05-14 19:20:39	System Ok	0Kmh	S	Nelson Road, Amanzimtoti, KwaZulu-Natal, South Africa	-30.0485°	30.8809°
Demo	2010-06-02 15:28:29	System Ok	0Kmh	S	Nelson Road, Amanzimtoti, KwaZulu-Natal, South Africa	-30.04842°	30.88082°



Log Out

- By clicking on the Red “Log Out” button, you will be logged off the EAT server.
- It is recommended that you do this when you have finished using the system, so as to prevent someone else accessing the location of your assets.



My Details/My Users

- By clicking on the “My Details” button at the top of the screen, you are able to change your personal details, password and the way the web site operates.
- If your access level is “User”, your menu will say “My Users”, and you will have to select the user you want to edit or remove.

My Details

User Name:	andy
User ID:	3
Password:	
First Name:	Andy
Last Name:	Coetzee
Email Address:	andy@easytracking.co.za
Postal Address:	P.O. Box 477
City:	Umbogintwini
Country:	South Africa
ZIP/Postal Code:	4120
Screen Refresh Rate:	15 Seconds
Display Level:	Advanced
Units:	Metric
GPS Format:	±dd.ddddd°
Show Speed On Map:	Yes
Show Direction On Map:	Yes
Show Date/Time On Map:	Yes
Local Time:	GMT+2Hrs
Map Type:	Google Maps (Maps)

Update

Change Password

Change the screen update time

Change what you want displayed On the main screen

Type of Map you want on the main screen (Road, or satellite photograph)

Press this button to save your chances



My Assets

- Click on “My Assets” to see a list of assets allocated to your account.
- Select the asset you want to edit by clicking on the down-arrow and then press the red “View/Edit Asset” button.

View/Edit Asset

Tracking Unit ID:	358281005439355
Display Name:	BMW
Description:	Test EZ863GPS
Icon:	Car
Show Asset On Map:	Yes
SMS Notification Cell Number:	
Notification sent for speeding greater than:	130 Km/h
Email Notification:	andy@easytracking.co.za
User:	ANDY (Andy)

Notes
For SMS notification, you must append the international dialing prefix (e.g. 27 for South Africa).
For multiple SMS and email notifications, separate each cellphone number or email address with a semicolon (;).

Save

Annotations:

- The name displayed on the map and reports (points to Display Name)
- Any additional information (points to Description)
- Display icon for the the asset on the map (points to Icon)
- Display the asset on the map (points to Show Asset On Map)
- Cell phone number to where violation notifications are to be sent (points to SMS Notification Cell Number)
- Speeding notification limit (points to Notification sent for speeding greater than)
- Email address to where violation notifications are to be sent (points to Email Notification)

Press this button to save your changes (points to Save)



My POI - 1

- In order to make your reports and address information more useful, you are able to add a Point Of Interest whereby the system will use this information instead of the street information when the asset enters the POI radius.
- Click on the red “My POI” button at the top of the page

A list of all your saved POI location

POI description for editing a POI

The effective radius for the POI

Remove POI from database

Update the selected POI

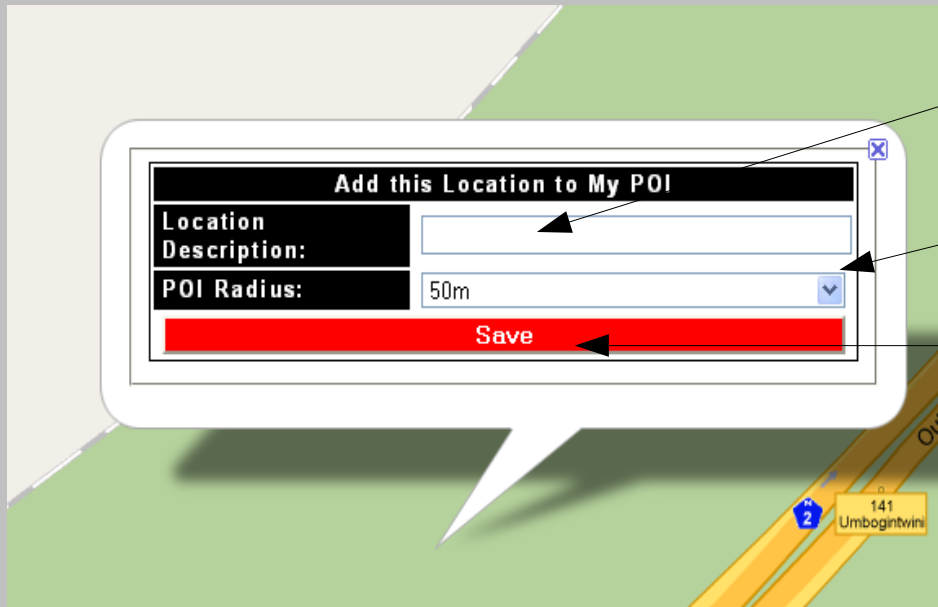
POI is a No-Go area and will generate a violation if the asset enter this POI

Update the position database to reflect these POI



My POI - 2

- You are able to add POI on the main screen. This is done by single clicking on the map at the required location.
- This will open an edit box on the map.



The name of the POI

Effective radius of the POI

Save this POI



My POI - 3

- You are also able to add POI on the main screen by clicking on an asset at a required location.
- This will open an edit box on the browser. This will give you the present address of the asset.
- Enter the name for this POI, then press “OK” to save the POI. The effective radius will be defaulted to 50 metres. You are able to edit this POI in the “My POI” screen.

A screenshot of a browser dialog box with a blue title bar that reads "The page at https://www.easytracking.co.za says:". The dialog box has a yellow background and a blue border. On the left side, there is a blue circular icon with a white question mark. To the right of the icon, the text reads "Enter your own description for location: Beechgate Crescent, Umbogintwini, Durban, KwaZulu-Natal, South Africa". Below this text is a white text input field with a vertical cursor. At the bottom of the dialog box, there are two buttons: "OK" and "Cancel".



Reports

- By clicking on the red “Reports” button at the top of the page, you have access to a number of useful reports.

Asset Reports

Asset: Alex (Not required for Visit Report)

Report For: User Date/Time
Start Date: 2010-06-03 00:00:00
End Date: 2010-06-03 23:59:59

Last Hour
 Yesterday

Stop Duration: Greater than 2 Minutes (Only required for Stop Duration Report)

Location: Street: Suburb: (Only required for Visit Report)

Generate required report

Detail Trip Report With Map	
Trip Summary Report	Stop Duration Report
Violation Report	Visit Report

Annotations:

- Asset list
- Date and time for which report is required
- Stop Duration
- Location search (only one required)
- Generate required report



Reports – Detail Trip

- Once you have selected the asset, and the date and time, then by clicking on the red “Detail Trip Report” button, you will be presented with a map and a detailed report of everything that happened with that asset during the selected period.

The number next to the icon corresponds with the number in the table below the map.

This colour matches the trip shown on the map.

The screenshot shows the EAT web application interface. At the top, there are navigation tabs: Reports, My POI, My Assets, My Users, and Log out. Below the navigation is a map of a coastal area in South Africa. A red line on the map indicates a trip path, with numbered icons (1-15) marking specific points along the route. To the left of the map is an 'Asset List' dropdown menu showing 'BMW' and a 'Get Latest Position' button. Below the map is a 'History Report for BMW from 2010-06-03 07:00:00 to 2010-06-03 08:59:59'. The report table includes columns for ID, Asset Name, Date/Time, Status, Speed, Course, Next/Actual Location, Latitude, Longitude, and Trip. A red 'Save as PDF' button is located at the bottom right of the report table.

ID	Asset Name	Date/Time	Status	Speed	Course	Next/Actual Location	Latitude	Longitude	Trip
0	BMW	2010-06-03 07:13:00	System Ok	0Kmh	SW	Nelson Road, Amanzimtoti, KwaZulu-Natal, South Africa	-30.0485	30.8807	0.0Km
1	BMW	2010-06-03 07:38:54	Trip Start	26Kmh	N	26-40 Nelson Rd, Amanzimtoti 4126, South Africa	-30.0486	30.8811	0.0Km
2	BMW	2010-06-03 07:39:31	Moving	32Kmh	SW	54 Peacehaven Rd, Amanzimtoti 4126, South Africa	-30.0472	30.8809	0.2Km
3	BMW	2010-06-03 07:40:05	Moving	55Kmh	NW	Khetho Mkhunya Road, Amanzimtoti, KwaZulu-Natal, South Africa	-30.0464	30.8791	0.4Km
4	BMW	2010-06-03 07:40:48	Moving	67Kmh	N	Fynn Road, Amanzimtoti, KwaZulu-Natal, South Africa	-30.0414	30.8814	1.0Km
5	BMW	2010-06-03 07:41:33	Moving	24Kmh	NW	Fynn Road, Amanzimtoti, KwaZulu-Natal, South Africa	-30.0348	30.8817	1.8Km
6	BMW	2010-06-03 07:42:08	Moving	68Kmh	E	Umdoni Road, Amanzimtoti, KwaZulu-Natal, South Africa	-30.0337	30.8842	2.1Km
7	BMW	2010-06-03 07:42:37	Moving	33Kmh	NE	Blazeway, Amanzimtoti, KwaZulu-Natal, South Africa	-30.0346	30.8888	2.6Km
8	BMW	2010-06-03 07:43:09	Moving	59Kmh	NW	Mass Kuisick Drive, Umbogintwini, Durban, KwaZulu-Natal, South Africa	-30.0319	30.8884	2.9Km
9	BMW	2010-06-03 07:43:41	Moving	12Kmh	NE	Beechgate Crescent, Umbogintwini, Durban, KwaZulu-Natal, South Africa	-30.0298	30.8874	3.1Km
10	BMW	2010-06-03 07:44:48	Moving	31Kmh	NE	Beechgate Crescent, Umbogintwini, Durban, KwaZulu-Natal, South Africa	-30.0268	30.8910	3.6Km
11	BMW	2010-06-03 07:45:52	Moving	0Kmh	NE	Beechgate Crescent, Umbogintwini, Durban, KwaZulu-Natal, South Africa	-30.0261	30.8918	3.8Km
12	BMW	2010-06-03 07:46:18	Power Disconnected	0Kmh	NE	Beechgate Crescent, Umbogintwini, Durban, KwaZulu-Natal, South Africa	-30.0261	30.8918	3.8Km
13	BMW	2010-06-03 07:47:01	Trip End	0Kmh	NE	Beechgate Crescent, Umbogintwini, Durban, KwaZulu-Natal, South Africa	-30.0261	30.8918	3.8Km
14	BMW	2010-06-03 08:27:44	Power Connected	0Kmh	N	Beechgate Crescent, Umbogintwini, Durban, KwaZulu-Natal, South Africa	-30.0264	30.8919	0.0Km
15	BMW	2010-06-03 08:34:01	System Ok	0Kmh	N	Beechgate Crescent, Umbogintwini, Durban, KwaZulu-Natal, South Africa	-30.0265	30.8919	0.0Km

You can save a copy of this report by clicking on the red “Save as PDF” button.



Reports – Trip Summary

- Once you have selected the asset, and the date and time, then by clicking on the red “Trip Summary Report” button, you will be presented with a summary report of everything in the trip undertaken with that asset during the selected period.

You can save a copy of this report by clicking on the red “Save as PDF” button.

Trip Summary Report

Summary Trip Report for BMW from 2010-06-03 07:00:00 to 2010-06-03 08:59:59.								Save as PDF	
Trip	Asset Name	Stop Duration	Start Date/Time	Nearest Start Location	End Date/Time	Nearest End Location	Trip Duration	Odo	
1	BMW		2010-06-03 07:39:54	28-40 Nelson Rd, Amanzimtoti 4126, South Africa	2010-06-03 07:47:11	Beechgate Crescent, Umbogintwini, Durban, KwaZulu-Natal, South Africa	08m 07s	3.7Km	
Totals		09m 00s					08m 07s	3.7Km	

The time the asset was stationary between stops.

The time the asset start a trip.

The location from where the asset started the trip.

The time the trip ended.

Where the trip ended.

How long the trip took.

The distance travelled during this trip.



Reports – Stop Duration

- Once you have selected the asset, and the date and time, then by clicking on the red “Stop Duration Report” button, you will be presented with a summary report of how long an asset was stopped at each location during the selected period. A stop is any time greater to the stop time on the report page.

Stop Duration Report

Stop Duration Report for BMW from 2010-06-03 00:00:00 to 2010-06-03 12:22:30.					Save as PDF
Stop	Asset Name	Nearest Location	Arrive Date/Time	Depart Date/Time	Stop Duration
1	BMW	Beechgate Crescent, Umbogintwini, Durban, KwaZulu-Natal, South Africa	2010-06-03 07:47:01		04h 35m 29s
Total Stop Duration:					04h 35m 29s

You can save a copy of this report by clicking on the red “Save as PDF” button.

The location where the asset was stopped.

The time the asset arrived at the location.

The time the asset left the location.

How long the asset was at that location.



Reports – Violation

- Once you have selected the asset, and the date and time, then by clicking on the red “Violation Report” button, you will be presented a report of all the violations for the asset during the selected period. These include speeding, No-Go area and battery disconnected (if back-up battery fitted).

You can save a copy of this report by clicking on the red “Save as PDF” button.

Violation Report for BMW from 2010-06-03 00:00:00 to 2010-06-03 23:59:59 .				Save as PDF
Violation	Asset Name	Violation Date/Time	Nearest Violation Location	Violation Type
1	BMW	2010-06-03 07:46:18	Beechgate Crescent, Umbogintwini, Durban, KwaZulu-Natal, South Africa	Power Disconnected
2	BMW	2010-06-03 10:01:41	Beechgate Crescent, Umbogintwini, Durban, KwaZulu-Natal, South Africa	Power Disconnected
3	BMW	2010-06-03 10:03:41	Beechgate Crescent, Umbogintwini, Durban, KwaZulu-Natal, South Africa	Power Disconnected

Number of violations: 3

The time the violation took place.

The location where the violation took place.

The violation type.



Reports – Location

- Once you have selected the date and time and typed the street or suburb name, then by clicking on the red “Location Report” button, you will be presented a report of all the assets that have reported being in that location during the selected period. Any asset selected in the asset list will be ignored.

Visit Report

Visit Report for location Nelson Road from 2010-06-03 00:00:00 to 2010-06-03 23:59:59. Save as PDF			
Visit	Asset Name	Location	Visit Date/Time
1	BMW	Nelson Road, Amanzimtoti, KwaZulu-Natal, South Africa	2010-06-03 00:12:37
2	Demo	Nelson Road, Amanzimtoti, KwaZulu-Natal, South Africa	2010-06-03 00:28:47
3	BMW	Nelson Road, Amanzimtoti, KwaZulu-Natal, South Africa	2010-06-03 01:12:42
4	Demo	Nelson Road, Amanzimtoti, KwaZulu-Natal, South Africa	2010-06-03 01:28:47
5	BMW	Nelson Road, Amanzimtoti, KwaZulu-Natal, South Africa	2010-06-03 02:12:43
6	Demo	Nelson Road, Amanzimtoti, KwaZulu-Natal, South Africa	2010-06-03 02:28:50
7	BMW	Nelson Road, Amanzimtoti, KwaZulu-Natal, South Africa	2010-06-03 03:12:47
8	Demo	Nelson Road, Amanzimtoti, KwaZulu-Natal, South Africa	2010-06-03 03:28:49
9	BMW	Nelson Road, Amanzimtoti, KwaZulu-Natal, South Africa	2010-06-03 04:12:55
10	Demo	Nelson Road, Amanzimtoti, KwaZulu-Natal, South Africa	2010-06-03 04:28:49
11	BMW	Nelson Road, Amanzimtoti, KwaZulu-Natal, South Africa	2010-06-03 05:12:58
12	Demo	Nelson Road, Amanzimtoti, KwaZulu-Natal, South Africa	2010-06-03 05:28:54
13	BMW	Nelson Road, Amanzimtoti, KwaZulu-Natal, South Africa	2010-06-03 06:12:59
14	Demo	Nelson Road, Amanzimtoti, KwaZulu-Natal, South Africa	2010-06-03 06:28:54
15	BMW	Nelson Road, Amanzimtoti, KwaZulu-Natal, South Africa	2010-06-03 07:13:00
16	Demo	Nelson Road, Amanzimtoti, KwaZulu-Natal, South Africa	2010-06-03 07:13:15
17	Demo	Nelson Road, Amanzimtoti, KwaZulu-Natal, South Africa	2010-06-03 07:42:03
18	Demo	Nelson Road, Amanzimtoti, KwaZulu-Natal, South Africa	2010-06-03 07:43:03
19	Demo	Nelson Road, Amanzimtoti, KwaZulu-Natal, South Africa	2010-06-03 08:43:06
20	Demo	Nelson Road, Amanzimtoti, KwaZulu-Natal, South Africa	2010-06-03 09:43:09
21	Demo	Nelson Road, Amanzimtoti, KwaZulu-Natal, South Africa	2010-06-03 10:18:25
22	Demo	Nelson Road, Amanzimtoti, KwaZulu-Natal, South Africa	2010-06-03 11:17:59
23	Demo	Nelson Road, Amanzimtoti, KwaZulu-Natal, South Africa	2010-06-03 11:43:13

Number of Positions: 23

You can save a copy of this report by clicking on the red “Save as PDF” button.



Q & A

- To protect the position of your assets, we have added a secure connection (similar to that used by the banks) to this site. You may get an error message if you are using Internet Explorer. Please follow the steps below to remove this error message which is caused by the Google Maps when used on this secure connection:-
 1. Going to Tools>Internet Options>Security
 2. Select the 'Security' tab
 3. Click the 'Custom Level' button
 4. In the 'Miscellaneous' section change "Display mixed content" to Enable.
- When doing stop reports, remember that a stop is 3 minutes of the tracking unit not moving and the stop time set on the report page.
- For up-to-date information on EAT, look at our Facebook page (link is on the EAT home page).
- If you require any assistance, or have any problems with our product, please contact andy@easytracking.co.za, or our helpline on 082 444 9047.